

One of My WIX SEO Working Report

On page/ Technical SEO

promotion: Link building -	https://pmt.sc/6n55k7AqfB9X
sculpting Link building -	https://pmt.sc/vsHa_SHLrGO0
contact us Link building -	https://pmt.sc/V7bMgwWl2wqq
service page- Link building -	https://pmt.sc/f-oCSg31bNKi
house parties link --	https://pmt.sc/p1pV9tPodBMZ
house parties alt	https://pmt.sc/tg_hx-M1GH-w
IG Alt text alt	https://pmt.sc/Yn1speQ8QdoB
kybella - alt -	https://pmt.sc/fQir-rip8lGf
facial meta-	https://pmt.sc/NMQ8nnpfvGMz
non sergical meta	https://pmt.sc/81SNVgYvvXZw
non sergical -alt-	https://pmt.sc/SCTphgWTLsku
book appoint -	https://pmt.sc/-355-opyKNkH
filler -alt--	https://pmt.sc/41BvPhb7AF8y
financinng - meta-	https://pmt.sc/3zc43bEn0An5
facial - alt text-	https://pmt.sc/TQgHd1Q0ZHym
Sculptra Facelift - alt-	https://pmt.sc/wM2ZoFSkYKL6

Backlinks/ Off page SEO

https://prnt.sc/ypr2tqugHfdf	
https://prnt.sc/q1Z_JAuCoZCX	
https://prnt.sc/KOlcyIb4IRiY	
https://prnt.sc/5eXkjSEJf7E3	
https://prnt.sc/kZnzv6egaLa_	
https://prnt.sc/Q1xYvww-ECRs	
https://prnt.sc/g5cQ6BQGXY0y	

Search Engine Optimization (SEO)

Optimize this site for search engines so more people can find you online.

Need Help?

SEO Assistant

Fix current issues and follow recommendations to improve this site's performance in search results. [Learn more](#)

[View all tasks](#)

99%

SEO Setup Checklist
[Continue Setup](#)

2

Issues
[View tasks](#)

2

Recommendations
[View tasks](#)

5

Completed tasks
[View tasks](#)

Google Search Console

Site performance on Google

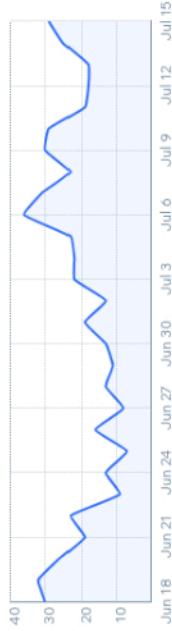
Google last reported data: 7/15/2023

Last 30 Days

Total performance over time

Impressions
577 ↑ 1,307%

Clicks
20 ↑ 1,000%



Most significant changes

Pages [Queries](#)

Increased ↓ Decreased

lavishhaesthetics.com

+316 | Total: 357 impressions

Impressions

/about

+92 | Total: 95 impressions

/services-2

+88 | Total: 90 impressions

/copy-of-weight-loss-2

+73 | Total: 73 impressions

/copy-of-weight-loss

+62 | Total: 62 impressions

[See full pages report](#)

[Go to Google Search Console](#)

[Switch Google Account](#)

Tools and settings



SEO Setup Checklist

Follow a personalized checklist of SEO setup tasks to help this site become more visible in online searches.



SEO Settings

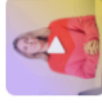
Customize your pages and meta tags for SEO and set your site preferences.



Site Inspection

Learn how Google views your site and troubleshoot pages not appearing correctly in search results.

Learn all about SEO



What Are Keywords and How to Choose...
03:00 min
[▶ Play Video](#)



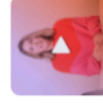
How to Optimize Your Website's Title Tags
02:00 min
[▶ Play Video](#)



What is a meta description and how...
5 min read
[Read More](#)



Header tags: What they are and how to...
5 min read
[Read More](#)



How to Optimize Your Page Content for SEO
02:00 min
[▶ Play Video](#)



How to Write Meta Descriptions for You...
02:00 min
[▶ Play Video](#)



[Go to the SEO Learning Hub](#)

3/0 completed

Home Activity Site & App Store Products Orders Gift Card Subscriptions Loyalty & Referrals Contacts Communications Automations Marketing & SEO Marketing Home

[Continue >](#)

[Go to SEO Settings >](#)

[Go to Site Inspection >](#)

[Go to URL Redirect Manager >](#)

[Go to Site Verification >](#)

[Go to Sitemaps >](#)

[Go to Robots.txt Editor >](#)

[?](#)

URL Redirect Manager
Redirect site visitors and search engines from an old URL to a new URL

Site Verification
Add verification meta tags from search engines to claim site ownership & get access to search data.

Sitemaps
View your site's XML sitemap index & learn how it's optimized for you.

Robots.txt Editor
Edit the file that tells search engines which pages to crawl (for advanced users only).

www.lavishhaesthetics.com

📅 Last 7-day period

TOTAL IMPRESSIONS
168 ↑ 14%

TOTAL CLICKS
2 0%

CLICK-THROUGH RATE
1.19%

See report on [Google Search Console](#)

Create & schedule marketing activities

Your marketing planner

Today | July 2023 | Add Activity

16 SUN	17 MON	18 TUE	19 WED	20 THU	21 FRI	22 SAT
--------	--------	--------	--------	--------	--------	--------